

DEC3900 Series

Rack Security Appliance Enterprise Performance Edition

DESIGNED, MADE
AND SHIPPED FROM



Enterprise Performance

Rack mountable appliance, designed for high-throughput environments
redundant deployments and performance-driven networks.
Bridging the gap between business & datacenter.



Upto 35Gbps Throughput
3 Million Packets per Second



Web Application Firewall & reverse Proxy,
Captive Portal support for OpenID Connect



Upto 7.9Gbps
Inline Intrusion Prevention



Upto 512 GB Sufficient Space
for Logging & Reporting



Low latency
Fast filtering



System wide two-factor authentication.
Compatible with Google Authenticator.



High-Speed VPN Acceleration
5Gbps (single) / 12Gbps (multi tunnel)
IPsec 2.8Gbps OpenVPN DCO
4Gbps Wireguard



Dual Power Supply (selected models)
Integrated non-interrupted
automatic failover

Enterprise grade failover

Supporting high availability setups when combining two devices in carp mode including optional redundant powersupplies for mission critical environments



Redundant power architecture

Two models support Integrated automatic failover with dual high-efficiency power supplies ensuring maximum uptime for critical enterprise environments.

High-performance multi-core architecture

Designed for sustained enterprise workloads including IDS/IPS, VPN aggregation and multi-gigabit routing.

Low noise cooling

The DEC3900 Series comes with an efficient cooling design that utilises low noise fans with specially designed heatsinks and air-ducts. Not only does this lower the produced noise to a level below 42dB(A), it also minimises overall power consumption.

Sufficient storage & RAM

Upto 512 Giga Byte of integrated storage for logging and advanced features. A maximum of 32 Giga Byte of memory for most demanding features and plug-ins like Zenarmor

Flexible high-speed connectivity

Choose the interface mix that fits your infrastructure: 2.5GbE copper, 10Gb SFP+ and optional 25Gb SFP28 for high-density uplinks and aggregation.

Model differentiation	PSU	25Gbps SFP28	Position
DEC3920	Single	No	Performance entry
DEC3940	Dual	No	Redundant enterprise
DEC3960	Dual	Yes	Enterprise flagship

Certified hardware from the developers

Made in the Netherlands



Bundled with a free year OPNsense® Business Edition

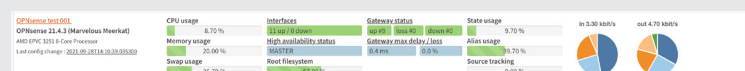
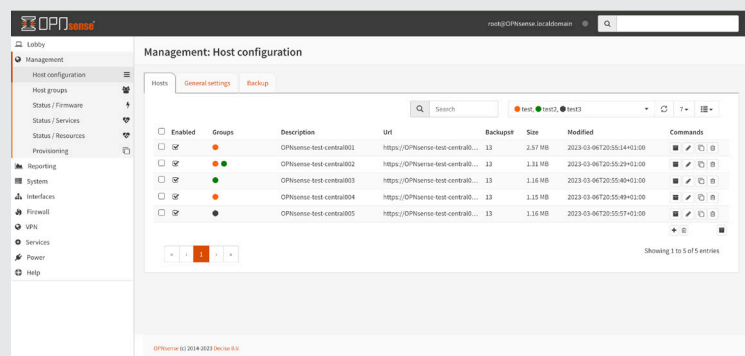
A 5-star experience

- * Commercial firmware repository
- * Official OPNsense Open Virtualisation Image
- * Free E-Book (English & German)
- * Free E-learning course: Hands-On Labs for Beginners
- * Free professional features:
 - Web Application Firewall
 - Proxy Access
 - Extended Blocklist
 - OPNcentral™
 - Integrated GeoIP database

OPNcentral™

Central Management,
the OPNsense® way

- Provisioning
- Multi tenancy using host groups
- Centralised Backups
- Centralised Firmware Upgrades
- Monitoring:
 - Machine state
 - Firmware version
 - Resources



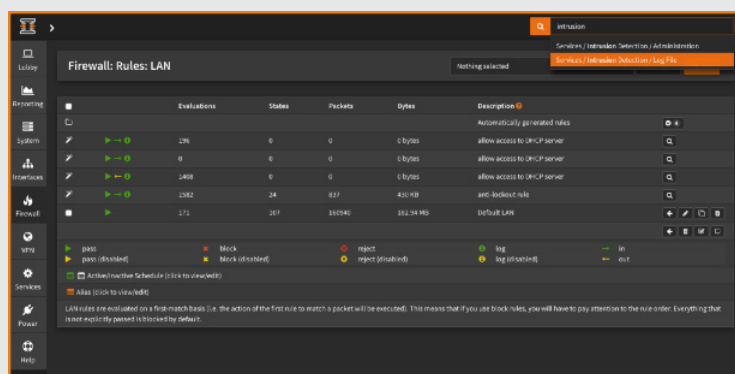
DEC3900 Series

Software

Versatile, open source and fully featured

OPNsense is Deciso's fast growing open source firewall and security platform released under an Open Source Initiative approved license. Its rich feature set is combined with the benefits of open and verifiable sources.

All features can be used from within the easy to use graphical interface, equipped with a build-in search feature for quick navigation. Protecting your network has never been this easy with features such as; the integrated intrusion prevention system and two-factor authentication for safely connecting mobile users.



Businesses

Protect your business network and secure your connections. From the stateful inspection firewall to the inline intrusion detection & prevention system everything is included for free. Use the traffic shaper to enhance network performance.

Schools

Limit and share available bandwidth evenly amongst students and utilise the category based web filtering to filter unwanted traffic such as adult content and malicious websites. It is easy to setup as no additional plugins nor packages are required.

Hotels

OPNsense offers a captive portal to control guest internet access for a limited duration. Vouchers can easily be created via the graphical user interface.

On the road

Even on the road OPNsense is a great asset to your business as it offers OpenVPN and IPSec VPN solution with road warrior support and two-factor authentication. The easy client exporter makes configuring your OpenVPN SSL client setup a breeze.

Remote Offices / Branches & SOHO

The integrated site to site VPN (IPsec or SSL VPN) can be used to create a secure network connection to and from your remote offices. Enjoy the easy configuration and online searchable documentation with simple how-to type of articles to get you started, quickly. Pluggable support is offered for ZeroTier, Tinc as well as Wireguard.

Specifications and model comparison

Models	DEC3920	DEC3940	DEC3960
			
Software			
Preinstalled software	OPNsense®	OPNsense®	OPNsense®
License	Open Source + 1 year free Business Edition	Open Source + 1 year free Business Edition	Open Source + 1 year free Business Edition
Hardware Specifications			
SFP+ Ports [10Gbps] / SFP28 Ports [25Gbps]	2/0	2/0	2/2
GbE RJ45 Ports [100/1000/2500Mbps]	4	4	4
USB-C Ports	1	1	1
Console Port	1	1	1
Internal Storage	512MB M.2. Solid State Flash	512MB M.2. Solid State Flash	512MB M.2. Solid State Flash
Memory	16GB DDR5	32GB DDR5	32GB DDR5
CPU Cores	8	8	8
Virtual Interfaces (802.1q VLANs)	4093	4093	4093
System Performance			
Firewall Throughput	36.8Gbps	36.8Gbps	36.8Gbps
Firewall Packets Per Second	3.07 Million pps	3.07 Million pps	3.07 Million pps
Firewall Port to Port Throughput	9Gbps	9Gbps	22Gbps
Concurrent Sessions	15 Million	31 Million	31 Million
Firewall Latency (average)	67 µS	67 µS	67 µS
Firewall Policies (Recommended Maximum)	10000	10000	10000
IPsec VPN Throughput (Single / Multiple tunnels)	5.4Gbps / 12.5Gbps	5.4Gbps / 12.5Gbps	5.4Gbps / 12.5Gbps
IPsec VPN Packet Per Second (Single / Multiple tunnels)	527 Kpps / 1190Kpps	527 Kpps / 1190Kpps	527 Kpps / 1190Kpps
OpenVPN DCO Throughput	2.81Gbps	2.81Gbps	2.81Gbps
OpenVPN DCO Packets Per Second	272Kpps	272.7Kpps	272.7Kpps
Wireguard Throughput	4.23Gbps	4.23Gbps	4.23Gbps
Wireguard Packets Per Second	410Kpps	410.95Kpps	410.95Kpps
Threat Protection Throughput	7.93Gbps	7.93Gbps	7.93Gbps
Threat Protection Throughput Packet Per Second	700Kkpps	700Kkpps	700Kkpps
High Availability with State Synchronisation	Requires two	Requires two	Requires two
Dimensions			
Height x Width x Depth (mm)	43.8 (1U) x 482.6 (19") x 287 (259 excl. mount/handle)	43.8 (1U) x 482.6 (19") x 287 (259 excl. mount/handle)	43.8 (1U) x 482.6 (19") x 287 (259 excl. mount/handle)
Height x Width x Length (inches)	1.73 x 19 x 11.3 (10.2 excl. mount/handle)	1.73 x 19 x 11.3 (10.2 excl. mount/handle)	1.73 x 19 x 11.3 (10.2 excl. mount/handle)
Form Factor	19" Rackmountable	19" Rackmountable	19" Rackmountable
Weight (appliance only)	2.97Kg	3.18Kg	3.29Kg
Environment			
Power Requirements	100-240 VAC, 50-60 Hz	100-240 VAC, 50-60 Hz	100-240 VAC, 50-60 Hz
Maximum Current (single PSU)	1.52A	1.52A	1.52A
Power Consumption (Typical - single PSU)	28W	30W	36W
Heat Dissipation	95.5 BTU/hr	102.4 BTU/hr	122.8 BTU/hr
Operating Temperature	0 to +45°C	0 to +45°C	0 to +45°C
Storage Temperature	-20 to +70°C	-20 to +70°C	-20 to +70°C
Humidity	10-90% non-condensing	10-90% non-condensing	10-90% non-condensing
Regulatory Compliance			
	FCC part 15 Class A, CE, Rohs, REACH	FCC part 15 Class A, CE, Rohs, REACH	FCC part 15 Class A, CE, Rohs, REACH

All measurements are based upon TCP traffic unless stated otherwise. Total Firewall Throughput is calculated based on maximum PPS and standard 1500 byte packets.
 Maximum PPS is measured using 500vbyte packets. IPS performance is measured using 25K ET Open malware rules and standard 1500 byte package size, (SSL) VPN is measured using AES256GCM16.
 Concurrent sessions are based upon memory available, where one state consumes 1KB of memory and 1GB of memory is reserved for system tasks. Latency is measured as an average over 60 seconds.